



Help us frame the future at [www.myplace2021.com.au](http://www.myplace2021.com.au) or 9335 2209

## Fact Sheet | Stanmore

### Past

The original owners of the land in the Marrickville Council area were the Cadigal Wangal clans, who lived in the area for more than 40,000 years. The Cadigal Wangal clans were part of the Eora nation and spoke the coastal Eora language. The Aboriginal name for most of the present day Marrickville Council area was Bullanaming.

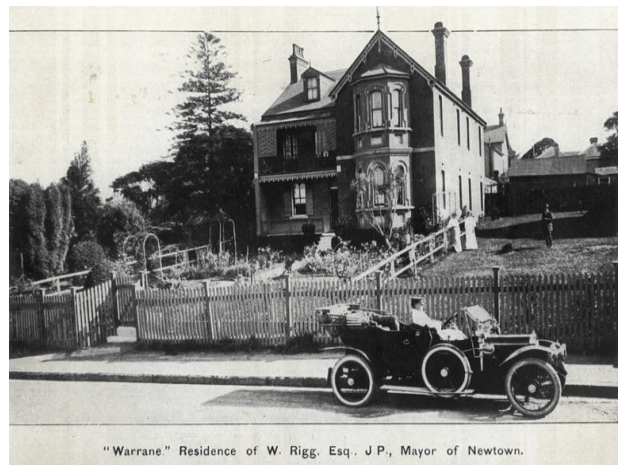
Stanmore was named by a prosperous saddler, John Jones. He purchased land in 1835 where Newington College now stands and called it the Stanmore Estate. James named it after his Middlesex birthplace, a north London suburb. The current suburb of Stanmore is larger than the original estate and includes the area originally known as Kingston.

The first Norfolk pines on the Australian mainland were planted along the line of Percival Road, leading to Parramatta Road, by Lt Colonel George Johnston. He was the owner of Annandale House, built in 1799 on the hill between Macaulay and Albany Roads, Stanmore. From here Johnston marched with his troops to Castle Hill to quell the convict revolt on 5 March 1804, and again on 26 January 1808 to arrest Governor Bligh during the Rum Rebellion.



**Stanmore Road (1925)**

Image held by Marrickville Council



**Warrane, Trafalgar Street Stanmore (1900)**

Image held by Marrickville Council



Help us frame the future at [www.myplace2021.com.au](http://www.myplace2021.com.au) or 9335 2209

## Present

### Population

	Number	% of total Marrickville population
<b>Total</b>	7,151	9.9%

In 2006, 13.0% of the population in Stanmore were children aged between 0-14 years, and 19.3% were people aged 55 years and over. The median age in Stanmore was 34 years, compared with 37 years for all people in Australia.

### Country of birth

Country	Number	% of suburb	% of Sydney
Australia	4,411	61.7%	60.4%
England	296	4.1%	3.5%
New Zealand	189	2.6%	2.0%
Italy	140	2.0%	1.1%
Greece	126	1.8%	0.8%
Portugal	106	1.5%	0.2%

English was the only language spoken at home by 69.7% of persons in Stanmore. The most common languages other than English spoken at home were: Greek 3.6%, Italian 2.9%, Portuguese 2.3%, Spanish 1.6% and Mandarin 1.4%.

### Occupation (Top 5)

Country	Number	% of suburb
Professionals	1,510	37.2%
Clerical and Administrative Workers	643	15.8%
Managers	603	14.9%
Technicians and Trades Workers	361	8.9%
Community and Personal Service Workers	332	8.2%

The median weekly individual income for people aged 15 years and over was \$726, compared with \$518 in Sydney. The median weekly household income was \$1,442, compared with \$1,154 in Sydney.

### Household composition

Of 1,669 families: 36.8% were couple families with children, 45.6% were couple families without children, 13.8% were one parent families and 3.8% were other families.

Of 3,132 occupied private dwellings: 37.8% were separate houses, 22.9% were semi-detached, row or terrace houses, 38.1% were flats, units or apartments and 1.1% were other dwellings.

21.6% of occupied private dwellings were fully owned, 26.4% were being purchased and 40.5% were rented.

Median sale price November 2009 : Houses: \$783,000 and Units: \$380,000 (Australian Property Monitors)

Source: Australian Bureau of Statistics 2006 Census (QuickStats)